



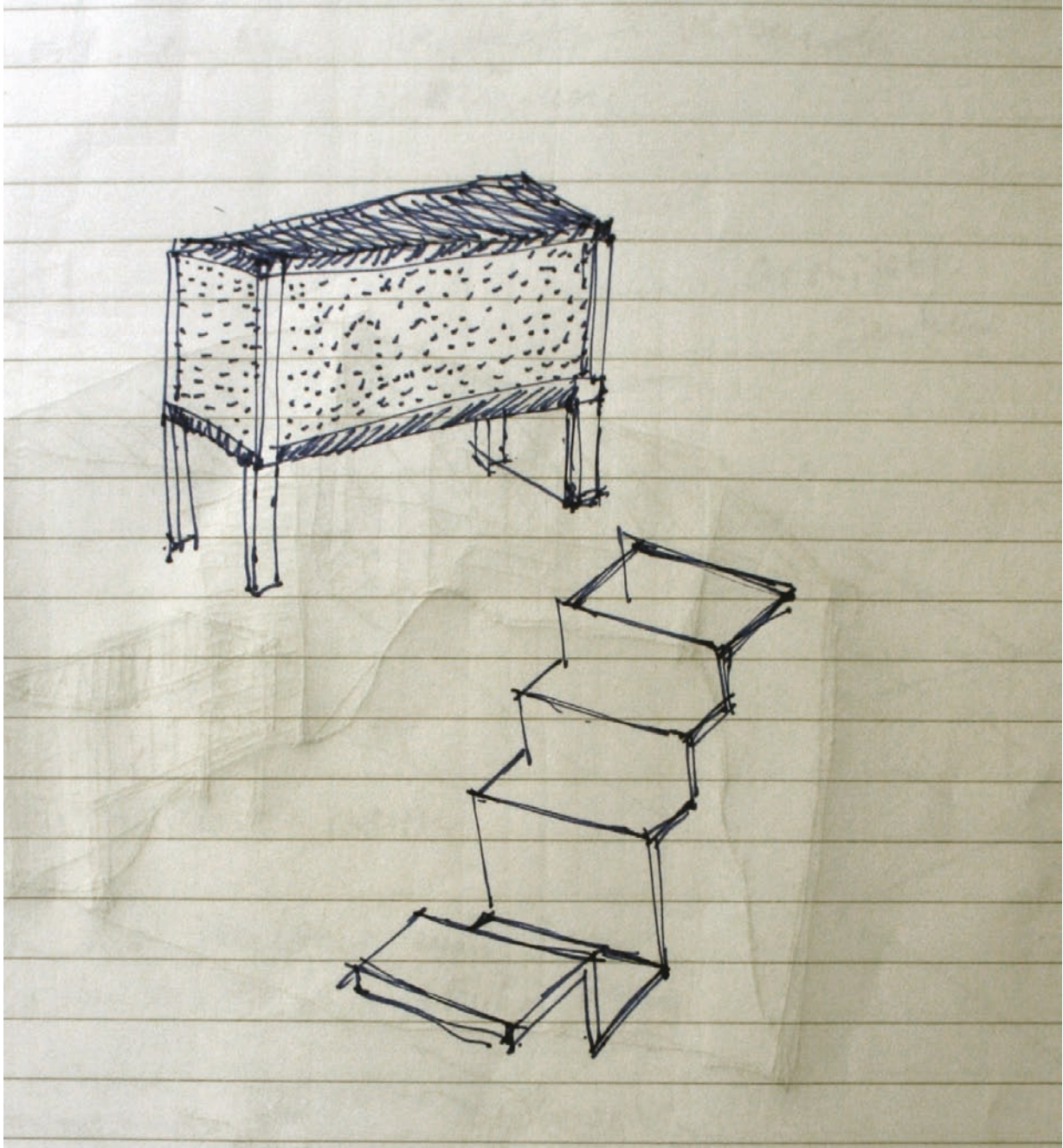
Lost in Holiday #1, 2014, digital print, black and white, 30,19 (w) x 22,19 (h)



Lost in Holiday #2, 2014, wooden stick and stones, 34 (l) x 32 (w) x 35 (h)



Lost in Holiday #3, 2014, trunk and stone pile, 240 (l) x 400 (w) x 60 (h)

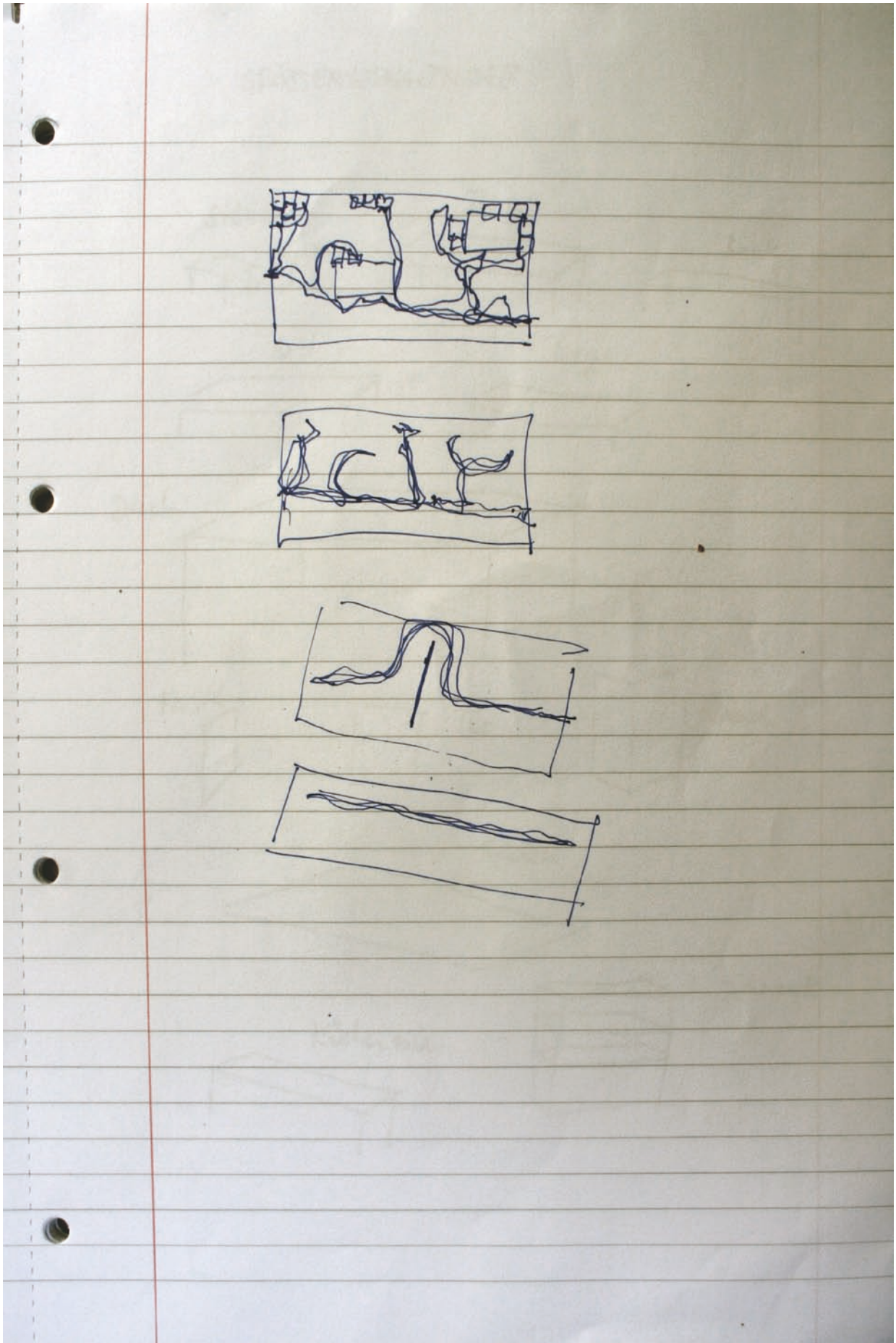


Lost in Holiday #4, 2014, drawing, blue felt pen, 15 (w) x 18 (h)





Lost in Holiday, 2014, 18-piece installation, view: Sykaminea, Lesbos, Greece



Lost in Holiday #5, 2014, drawing, blue felt pen, 21 (w) x 29 (h)



Lost in Holiday #6, 2014, tool storage, polytarp, wooden slats and skrews, 200 (l) x 40 (w) x 110 (h)



Lost in Holiday #7, 2014, trunk and stone pile, 50 (l) x 40 (w) x 28 (h)





Lost in Holiday #8, 2014, curtain, polytarp, wooden slats, tape and screws, 350 (l) x 210 (h)



Lost in Holiday #9, 2014, bundled polytarp, stone and mosquito net, 40 (l) x 18 (w) x 13 (h)



Lost in Holiday #10, 2014, table and chairs, wooden slats, screws and found object, 260 (l) x 130 (w) x 70 (h)



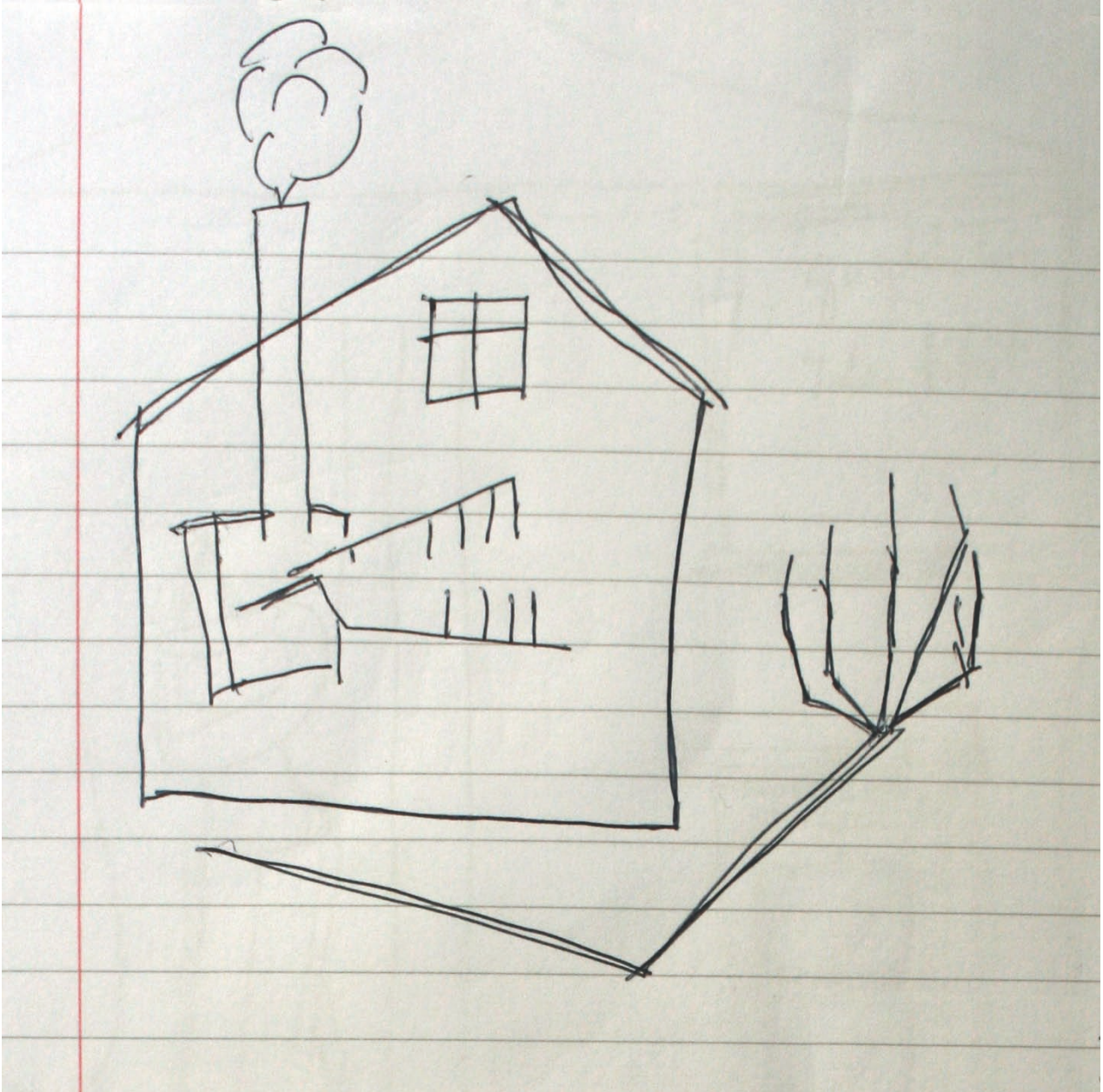
Lost in Holiday #11, 2014, house, polytarp, wooden slats and screws, 400 (l) x 160 (w) x 500 (h)



Lost in Holiday #18, 2014, bed, polytarp, olivetree brunches, mosquito net, wooden slats and skrews, 210 (l) x 130 (w) x 240 (h)



Lost in Holiday #12, 2014, handprints, burned clay, wood, black felt pen and white colour, 14 (l) x 16 (w) x 4 (h)



Lost in Holiday #13, 2014, drawing, black felt pen, 17 (w) x 19 (h)







Lost in Holiday #14, 2014, kitchen workspace, wooden slats, screws and found objects,
230 (l) x 60 (w) x 210 (h)





Lost in Holiday #15, 2014, ladder, wooden slats and skrews, 55 (l) x 8 (w) x 200 (h)



Lost in Holiday #16, 2014, ceiling, polytarp, wooden slats and screws, 200 (l) x 200 (w) x 400 (h)



Lost in Holiday #17, 2014, wall, polytarp, wooden slats and screws, 1600 (l) x 70 (w) x 200 (h)



